

KER 53 CRUISER RACER

NEWSLETTER ISSUE: #3

OCTOBER 2008

NEWS

- Overview
- Innovations
- Outlook

Meet the team



Mr. Peter Finis

Investor and owner of the first yacht. He studied chemical engineering at the Technical University in Karlsruhe. He founded his own engineering bureau called REDUCTA GmbH – Consulting Engineers for Environmental Technology - as far back as 1982. With great skill and a wealth of experience, REDUCTA's engineers and natural scientists at the head office in Düsseldorf and the branch in Gera advise industry, public-sector clients and private investors in many areas of contemporary environmental protection and conservation of natural resources. REDUCTA's motto reads "Invest on solid ground..."
www.reducta.de

Pit shares his sailing passion with his wife Petra and both grown up kids Oliver and Caterina – Happy man!

Still the biggest is sailing.



PCT Dubai October 2008

Overview

Construction is accelerating in Dubai. The deck is being laminated, this month the hull and structure including the engine were released from the mould and weighed - a perfect result - the yacht is right on the designers estimates. With the weight information, we are able to optimize the bulb weight and its shape.

Furniture samples have been completed and the interior is under construction.

INNOVATIONS

Capi2-Bus electrical systems "Capi2"

This takes innovation to another stage, the KER 53 will be equipped with market leading electrical technology - a lightweight electrical ring bus line system to distribute the power. The system saves 50% of the conventional wiring throughout the boat (like seen in modern motor vehicle technology). Each light / pump / electrical item will be plugged into the ring line. Having this main power line is around the boat means easy maintenance and flexibility are guaranteed as the power items are connect locally to the bus line you just add a simple power connection block and reset the programmable switchboard to allow changes to the electrical system.



Keel fin

Like the rest of the yacht, a lot has gone into computational fluid dynamics (CFD) to design the keel and it is critical to get the designed shape to gain the best performance. Normally to achieve the fine tolerances as seen on Grand Prix racing yachts, the keel is made and surface finished using computer numerical control (CNC) machining which is very costly. With the KER 53, to get this performance at a manageable cost, the keel fin will be made out of a cast section with composite leading and trailing edges with a complete shroud of glass. This makes also for long living low maintenance. For ultimate flexibility we have three keel versions:

1. Racing with 3.4 meter draft
 2. Performance cruising - 2.95 and 3.2 meter adjustable
 3. Ambitioned cruising lifting keel with 2.40 to 3.60 draft (in preparation)
- Putting you where you want to be in terms of performance and lifestyle!

The KER 53 Team

PREMIER COMPOSITE TECHNOLOGIES
LLC Dubai
Builds the ambitious carbon yachts,
supplies to customers and provides the
warranty
www.premiercompositetechnologies.com

Jason Ker, KER DESIGN Valencia
Drew the beautiful lines
www.kerdesign.com

Mark Tucker, DESIGN UNLIMITED
Fareham
Is responsible for the interior design
www.designunlimited.net

John C. Alexander, CRAGGS ALEXANDER
Xabia is the project manager
john@craggsalexander.com

Sales contact
melanija@ker53.com

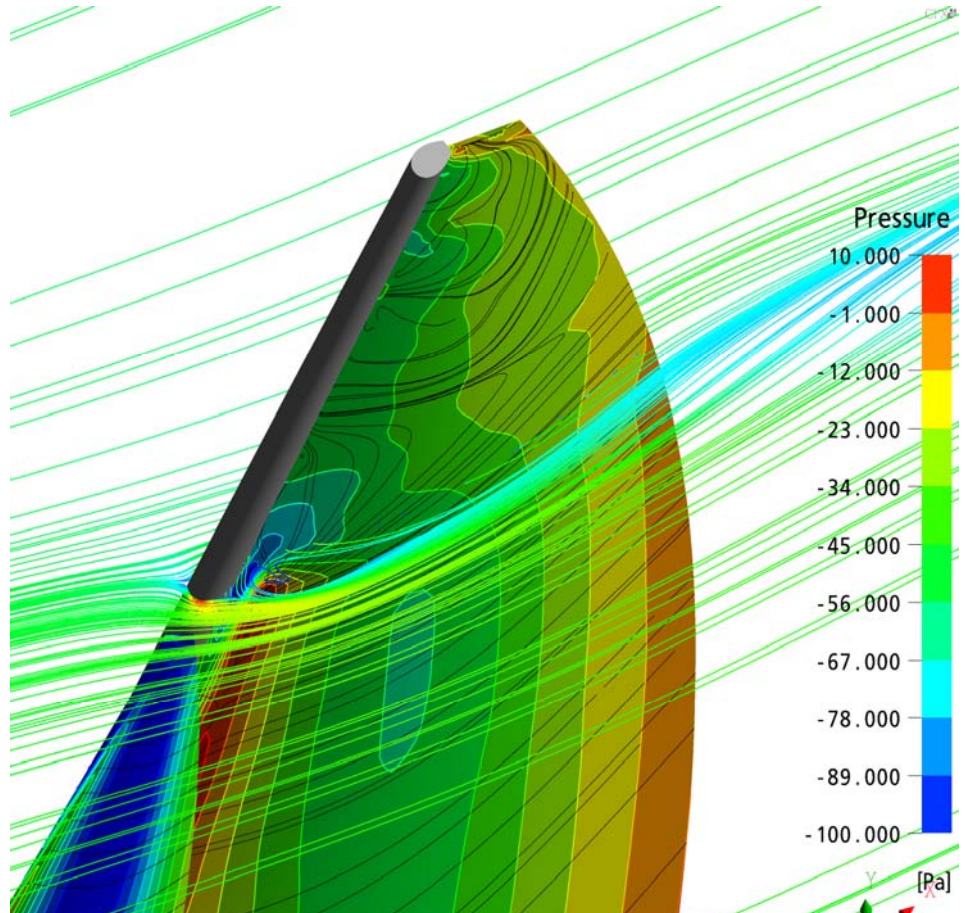
Media contact
media@ker53.com

Your PR and SC team

www.ker53.com

Perfect match mast section

In line with the innovation approach, the KER 53 has a custom designed mast section (again derived from the extensive use of CFD and our last Americas Cup sail design team) which works with the sail designer to provide optimum performance. This section is made by Formula Spars and unique to this yacht – guaranteed Grand Prix performance!



Autopilot

Normally, one see's a hydraulic ram attached to a quadrant arm, as another innovation, a powerful planet gear motor will be installed as part of the steering gear. The gear motor will placed using lightweight high strength cables directly connected to the sprocket drive. Resulting in a strong and compact solution for shorthanded cruising. With minimal friction it gives the helmsman "Dinghy" like steering.

Outlook:

- More news on the ongoing production
- New innovations
- Meet the team : John Alexander
- Doyle' Andy Pilcher will explain the new "spaysail" development. A radical new sail for the KER53 .